



End-of-lease resource guide

A comprehensive information source designed to make
your Yale equipment leasing experience a positive one





It's time to prepare.

Thank you for leasing your Yale® equipment with Yale Financial Services. We look forward to assisting you in making a smooth transition as you near the end of your lease. In this booklet we'll walk you through the simple steps.

ABOUT THIS GUIDE

The Yale Financial Services End-of-Lease Resource Guide is a comprehensive information source designed to make your Yale equipment leasing experience a positive one by providing you with clear and informative details about end-of-lease processes, options, resources and expectations. It also contains a valuable equipment pre-inspection section that provides guidance on minimally acceptable wear parameters.



TABLE OF CONTENTS

SECTION 1 End-of-lease process	4
--	----------

SECTION 2 Prepare your return	6
---	----------

SECTION 3 Equipment pre-inspection guide	8
--	----------

SECTION 4 Financing new equipment	22
---	-----------

SECTION 1

End-of-lease process



Get into your next Yale equipment lease.

You have been pleased with the performance and affordability of leasing Yale® equipment and would like to lease again. The easy 3-step process can get you started. Start this process at least 4 months before your current lease is scheduled to end.

SIMPLE 3-STEP PROCESS



1. NOTIFY

Notify Your Dealer of your desire to get into a new Yale equipment lease.



2. REVIEW

Your Yale Dealer will review your current lease and equipment.



3. UPGRADE

Your Yale Dealer will advise you of the best time to upgrade into a new Yale equipment lease.

SECTION 2

Prepare your return



Prepare your return



TRACK HOURS

Check actual usage hours to the allowed hours in your lease prior to return. If you are running over, contact Yale® Financial Services for available options.



CHECK CONDITION

Make sure your equipment meets the minimally acceptable return conditions. To help avoid unnecessary lease end concerns...check out the “pre-inspection guide” in the following section for details.



PLAN FOR REPAIR

If your equipment does not meet the minimally acceptable conditions, you have the option to repair it yourself or hire your local dealer.

Your lease will still continue while repairs are being made so plan accordingly...factor in additional time for parts delivery and estimated repair time.

SECTION 3

Pre-inspection guide



Pre-inspection guide

Our goal is to make the Yale® equipment lease return process a clear and efficient experience. We understand that your Yale equipment has been hard at work and is no longer “factory fresh”. To help you assess your equipment’s wear and use prior to return, we developed this unique visual pre-inspection guide to equip you with important return condition details on our top models. These return conditions are for leases documented to have “clean applications”. Please refer to your lease for “non-clean applications”.

For ease of reference we have categorized these return condition guidelines into the following groups:

- | | | |
|--|--|--|
| • Tires (p. 10) | • Forks (p. 11) | • Backrest & guards (p. 12-13) |
| • Seat & seatbelt (p. 12-13) | • Hoses (p. 14) | • Operator’s compartment (p. 15) |
| • LPG bracket (p. 15) | • Engine & oil (p. 16) | • Battery (p. 17) |
| • Lights (p. 17) | • Overhead guard (p. 18) | • Paint (p. 19) |

ACCEPTABLE EXTERNAL CONDITION

Frame and sheet metal may have normal wear and tear, but without breaks, cracks or excessive rust and corrosion.

ACCEPTABLE MECHANICAL CONDITION

Motors, engines, hydraulic systems, and transmissions must operate properly at fully rated loads in all gear ranges, both forward and reverse. Engines must not have knocking or smoking. There shall be no water, oil or hydraulic leaks. Mechanical drive train will be in good condition and operate quietly without vibrations. Service and parking brakes must be able to stop equipment within a safe distance, both forward and reverse. Brakes or brake assembly shall not have heat discoloration or be warped. Steering will operate normally stop-to-stop without excessive play in linkage or axle components.

TIRES: SOLID PNEUMATIC AND CUSHION

Some chunking, shown here relative to a quarter, is considered acceptable. Wear is not to exceed 40% remaining.



FORKS

Excessive heel wear results from improperly-adjusted chains, or continuous rubbing on hard surfaces. Heel wear must not exceed 10%, measured using an appropriate fork caliper.



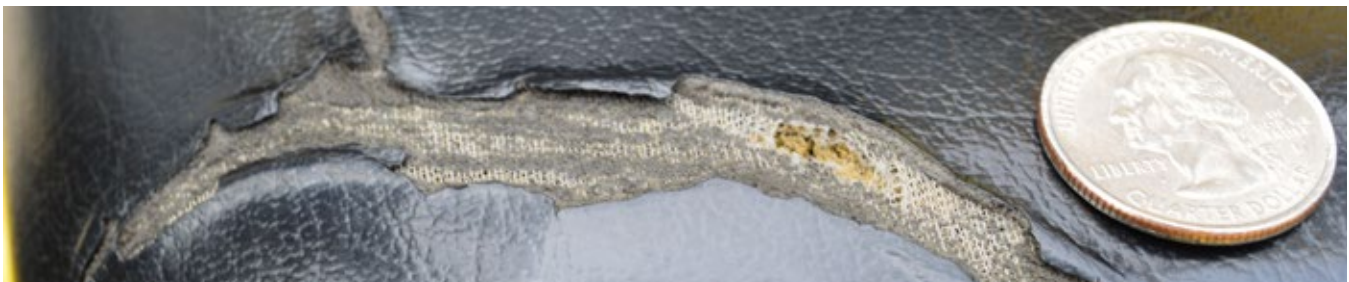
LOAD BACKREST (LBR)

Paint damage and slight bends are considered acceptable wear. LBRs may not be bent horizontally, or to the extent they touch the mast or inhibit proper placement of load on forks. No structural damage, missing vertical bars, or broken surface bars on the LBR is allowed. No structural damage to the mast is allowed.



SEAT

A minimal amount of surface damage, shown here relative to the size of a quarter, is considered acceptable wear. Cloth seats as well can show signs of wear, but no excessive rips or tears.



GUARDS

Minimal wear and cracks are considered acceptable. Major damage or missing covers must be repaired or replaced.

**SEAT BELT**

All seat belts and latches must be present and in good working order. The belt material may not be frayed or compromised. Hip restraints must be present as part of the seat assembly.



HOSES

Hoses must be free of excessive cuts and leaks, with hose sheaves in good working order. The picture below shows some case wear that is acceptable, with no leaks or hose lining showing. Hose sheaves should be free of bends and over-spreading. Secure tracking of the hoses is important.



OPERATOR'S COMPARTMENT

All pedals, buttons, and the horn are to be in working order. Cowling covers and plastic may not be damaged or missing. All data plates and decals must be properly attached and legible. Floor pad must be present; wear is acceptable, but holes in the mat are unacceptable.



LPG BRACKET

The propane tank holder must be in proper working order, with no damage or missing components. The hose and coupling must also be in good condition with no LPG leaks.



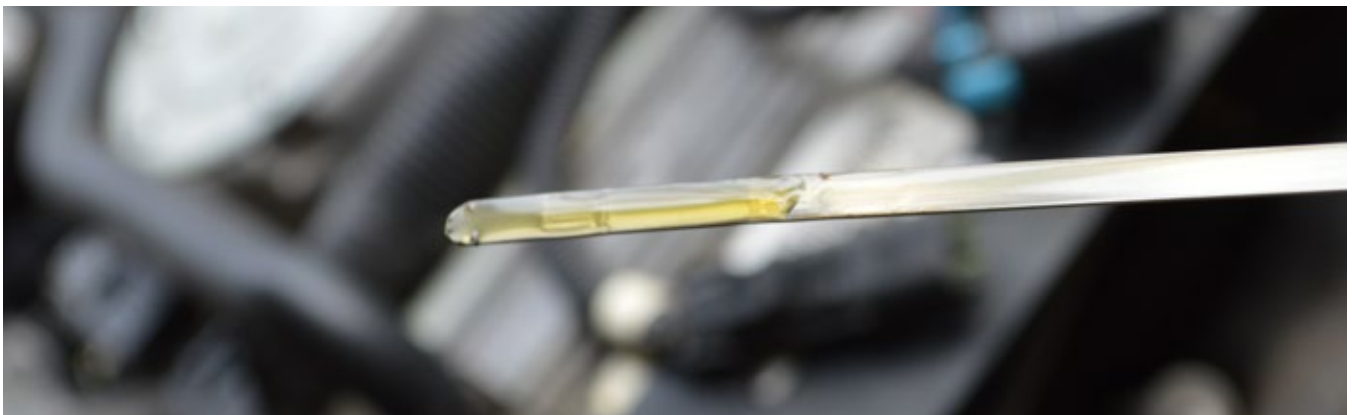
ENGINE

Must be clean and free of oil spray and debris. All caps, hoses and covers must be present and free of damage. Fan blade must be free of cracks, and have all blades intact. Engine should be recently serviced according to the service requirements.



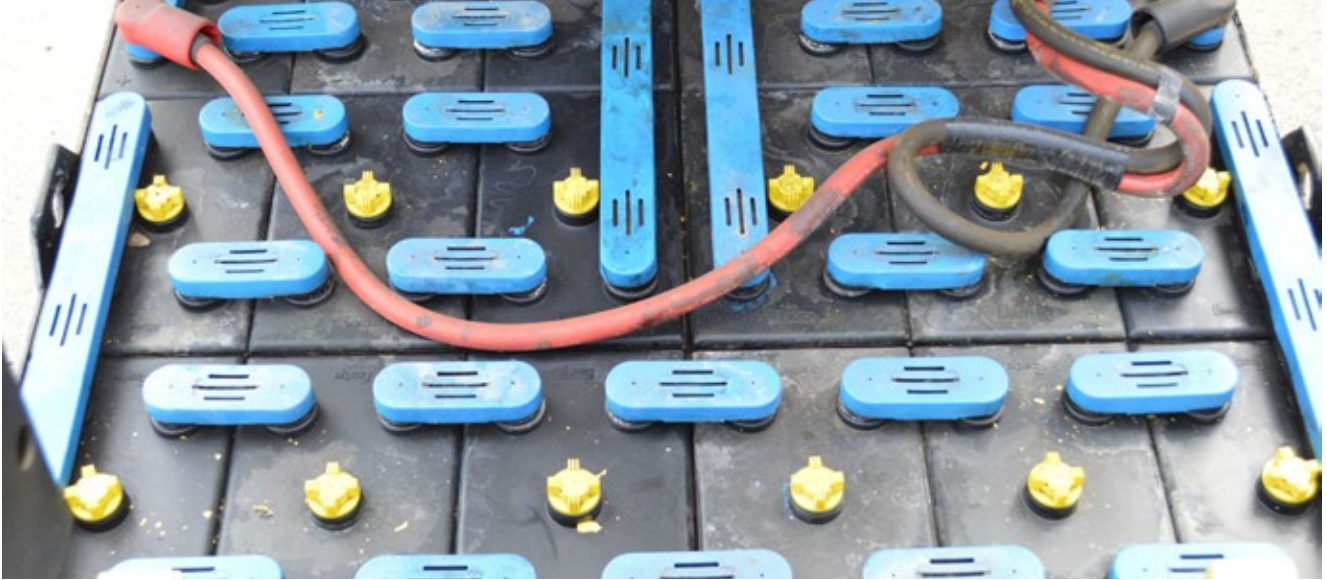
OIL

Must be clean, free of dirt, water, and at proper levels, as well as recently serviced per service requirements.



BATTERY

Battery cables and connectors must be in good condition and free from damage. Excessive acid spills and corrosion are not allowed. Batteries must be able to accept a charge and operate the truck.

**LIGHTS**

All lights must be in working order, and have all lenses intact. Any safety lights or strobes should be functioning as designed. Back up alarms should be functioning as installed.



OVERHEAD GUARD

Acceptable paint wear, and all decals must be legible and present. Unit should be free from non standard paint, decals, tape or stickers. No excessive dents, creases, or non-factory drilled holes. The Service Bulletin can provide further details, and may be requested from your authorized dealer.



PAINT

No graffiti or other paint colors other than factory-delivered. All Yale safety decals must be present and legible. Minimal customer identification can be allowed within reason.

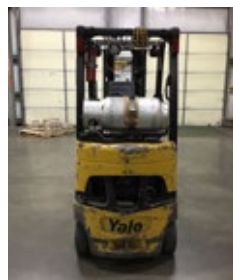


RETURNED EQUIPMENT INSPECTION TEMPLATE

INSPECTION REPORT - INTERNAL COMBUSTION

CONDITION REPORT - INTERNAL COMBUSTION			
Manufacturer	Model	Year	Serial Number
YALE MANUFACTURER	GC030VX	2012	C809V07588M
Mast	3 Stage FFL (Triplex)	Hours	4810 ✓
Mast Height Lowered	82	Fuel	LP
Mast Height Raised	187	Attachment	
Hydraulic Control Valve	3-Function	Directional Control	Lever
Capacity	3000	Tires	CUSHION
Mast Condition	✓	Engine	MAZDA
Mast Comments		Engine Inspected Condition	Hard starting
Lift Cylinder Condition	Leaks	Engine Inspected Comments	Further testing required
Lift Cylinder Comments		Radiator Condition	Fluid level low
Tilt Cylinder Condition	✓	Radiator Comments	Bent fins
Tilt Cylinder Comments		Transmission/MDU Condition	✓
Carriage Condition	✓	Transmission/MDU Comments	
Carriage Comments		Steering Pump Condition	✓
Load Backrest Condition	✓	Steering Pump Comments	
Load Backrest Comments		Hydraulic Pump Condition	✓
Forks Condition	Heels worn	Hydraulic Pump Comments	
Forks Comments		Hydraulic Motor Condition	✓
Overhead Guard Condition	✓	Hydraulic Motor Comments	
Overhead Guard Comments		Control System Condition	✓
Seat Condition	✓	Control System Comments	
Seat Comments		Differential Condition	✓
General Appearance Condition	Fair	Differential Comments	
General Appearance Comments	Sheet metal damage	Drive Tires % Remaining	60
General Comments		Drive Tires Condition	✓
OVERALL FAIR CONDITION.		Steer Tires % Remaining	60
		Steer Tires Condition	Chunked
		Steer Axle Condition	✓
		Steer Axle Comments	
		Brakes Condition	Excessive stopping distance
		Brakes Comments	Out of Adjustment
		Electrical Condition	Back-up alarm not functional
		Electrical Comments	
Inspector Company Name	Inspection Date		1/8/2018 4:53:56 PM
Inspector Name			

(* Legend: ✓=Checked OK)

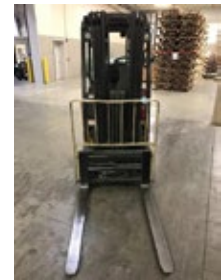


RETURNED EQUIPMENT INSPECTION TEMPLATE

INSPECTION REPORT - ELECTRIC

CONDITION REPORT - ELECTRIC			
Manufacturer	Model	Year	Serial Number
YALE MANUFACTURER	ERC040VA	2012	A96803244H
Mast	3 Stage FFL (Triplex)	Hours	4876 ✓
Mast Height Lowered	83	Voltage	36 Volt
Mast Height Raised	187	Attachment	FORK POSITIONER
Hydraulic Control Valve	4-Function	Directional Control	Lever
Capacity	4000	Tires	SOLID PNEUMATIC
Mast Condition	Height adjustment required	Steering Pump Condition	✓
Mast Comments		Steering Pump Comments	
Lift Cylinder Condition	Leaks	Hydraulic Pump Condition	✓
Lift Cylinder Comments		Hydraulic Pump Comments	
Tilt Cylinder Condition	✓	Hydraulic Motor Condition	✓
Tilt Cylinder Comments		Hydraulic Motor Comments	
Carriage Condition	✓	Control System Condition	✓
Carriage Comments		Control System Comments	
Load Backrest Condition	✓	Drive Motor Condition	✓
Load Backrest Comments		Drive Motor Comments	
Forks Condition	Heels worn	Differential Condition	
Forks Comments		Differential Comments	
Overhead Guard Condition	✓	Drive Tires % Remaining	60
Overhead Guard Comments		Drive Tires Condition	✓
Seat Condition	Hip Restraints OK	Steer Tires % Remaining	50
Seat Comments	Seat is in good condition	Steer Tires Condition	Chunked
General Appearance Condition	Good	Steer Axle Condition	✓
General Appearance Comments		Steer Axle Comments	
General Comments		Brakes Condition	Grabs
SOME MINOR WORK REQUIRED.		Brakes Comments	Worn Out
		Battery Present	Yes
		Charger Present	Yes
		Electrical Condition	✓
		Electrical Comments	
Inspector Company Name	Inspection Date		1/8/2018 4:42:47 PM
Inspector Name			

(* Legend: ✓=Checked OK)



Making it happen



FLEET FINANCING/LEASING PROGRAMS: ECONOMICAL ALTERNATIVES TO PURCHASING

Whether you are acquiring a single truck or an entire fleet of Yale® lift trucks, Yale Financial Services can offer a leasing program to meet your needs. As the financial partner to Yale Lift Truck Technologies and your local Yale® Dealer, Yale Financial Services provides you a convenient, flexible and economical alternative to an outright cash purchase. From ownership type lease arrangements to true lease options that address tax and financial reporting concerns, Yale Financial Services has a full complement of programs and products to allow you to acquire your new Yale® lift trucks.





Yale

21

- STOP! Authorized operators only in this area
- Danger! Authorized operators only in this area
- High velocity forks MUST BE DOWN in this area
- Forklift MUST BE DOWN in the working area

Yale

TECHNOLOGY

15-22

About Yale



Yale Lift Truck Technologies leverages over a century of material handling experience and substantial investment in innovation to bring the most advanced technology-driven lift truck solutions to market. The company offers a full line of award-winning lift trucks, including reach trucks, order pickers, turret trucks, pallet jacks and trucks, pallet stackers, tow tractors and counterbalanced forklifts, as well as powerful operator assist solutions, proven robotics and a wide range of power sources to help customers adapt to today's demanding supply chain. Yale and its independent dealer network support these solutions with comprehensive after-sales service, parts, financing and training.

MATERIALS HANDLING FOR:

Third-party logistics (3PL)

Auto parts distribution

Beverage

Cold & frozen foods

Food distribution

Food processing

Furniture & furnishings

Government

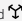
Health & pharma

Home centers & durables

Retail & e-commerce

Yale Lift Truck Technologies
P.O. Box 7367
Greenville, NC 27835-7367
U.S.A.

yale.com

© 2024 Hyster-Yale Materials Handling Inc., all rights reserved. YALE and  are trademarks of Hyster-Yale Materials Handling, Inc.